



**WACO**  
**MOZAMBIQUE**

# Corporate Profile

*A Focused Equipment Rental and Industrial Services Business*

[www.waco.co.mz](http://www.waco.co.mz)

We are  
**WACO**



## We are Waco Mozambique

### Enabling A Better Tomorrow, Every Day.

Established in 2013, Waco Mozambique Ltd is a focused equipment rental and industrial services business whose core activities include the rental and sale of formwork and scaffolding, powered access equipment, relocatable buildings and supply of portable sanitation and hygiene services. Waco Mozambique is able to bring all of these professional services to the Mozambique market.

Through our various operating divisions, the company has been involved in numerous construction and industrial projects in Maputo, Tete, Nacala, Beira, Pemba and Palma. We are proudly local, and are privileged to be able to draw on the expertise and market experience of our Johannesburg-based holding company, Waco Africa, which has operations in many sub-Saharan countries in Africa.



Environmental Mud Tank, Pemba

## Inspired by Values, Driven by Results

We believe that the foundation of our company is the people and the values that they believe in. Waco Mozambique has the same steadfast business values embedded into its fabric as our Waco Africa partners.

**Transparency**

**Accountability**

**Performance**

**Best Practice**

**Teamwork**

These are 'living values' that guide the behaviour of every staff member, every day. They inspire the 'can do' attitude that permeates the company and drives Waco Mozambique to deliver results that exceed our clients' expectations.

## We are Waco

Waco Mozambique is a subsidiary of Waco Africa which is one of Africa's largest industrial services businesses.

In turn, Waco Africa is the strategic spear for Waco International which operates focused equipment rental and industrial services business in Africa, Australasia and the United Kingdom.

## Our Core Business

Waco Mozambique mirrors the Waco Africa strategy of developing and maintaining the leading brands in their respective industries. These include:

**Formwork, Shoring & Scaffolding:**

**form-scaff**

Exclusive Distribution Partner  
for Doka in Sub-Saharan Africa

**doka**



**Powered Access**

**SkyJacks**

**Relocatable Modular Buildings and Camps**

**Specialist Temp Work Engineering**

**WACO**  
MODULAR

**WES**  
Waco Engineering Services

**Portable Sanitation and Hygiene Services**

**Sanitech**

The Waco Africa group combines over 60 years of experience and has the capacity to manufacture and supply large volumes of high-quality products. The result is extensive and comprehensive stockholdings of rental equipment and fleet in all sectors.



# Services Snapshot

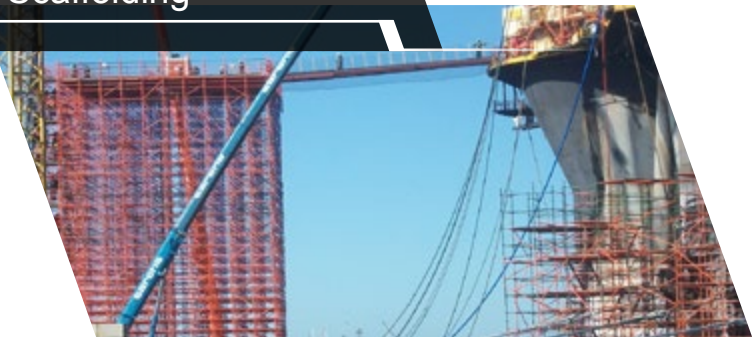
**form-scaff**

Forming



**SGB CAPE**

Contract Scaffolding



**abacus**  
SPACE SOLUTIONS

Relocatable Modular Buildings



Shoring



Industrial Maintenance



Full-Service Camp Solutions



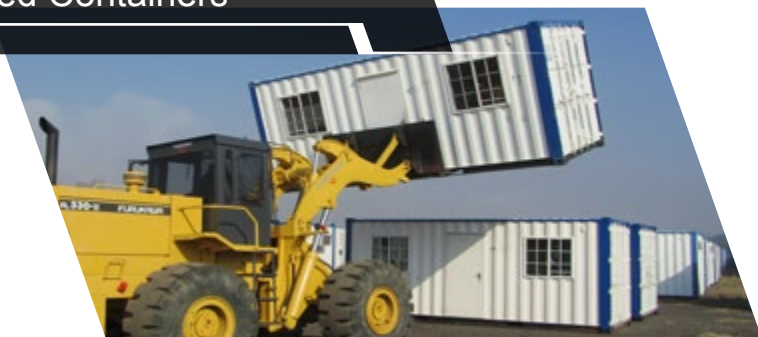
Scaffolding



Rope Access



Converted Containers

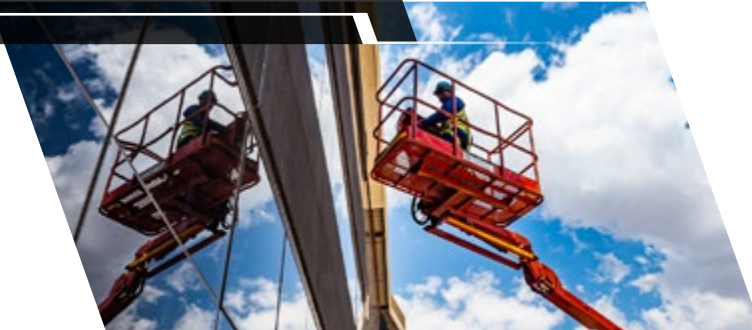




## Services Snapshot

**SkyJacks**

Mobile Elevated Work Platforms



**Sanitech**

Portable Sanitation

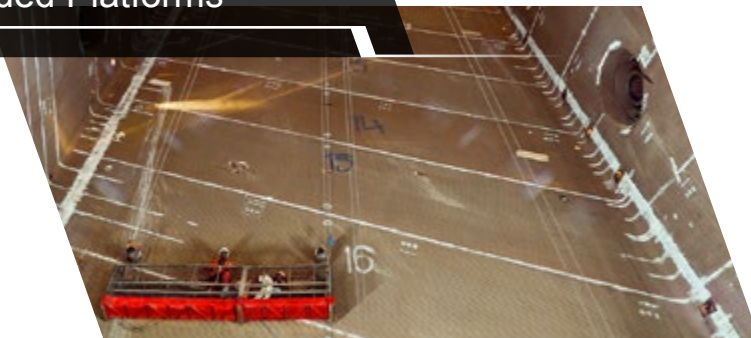


**WES**  
Waco Engineering Services

Front-End Engineering & Design



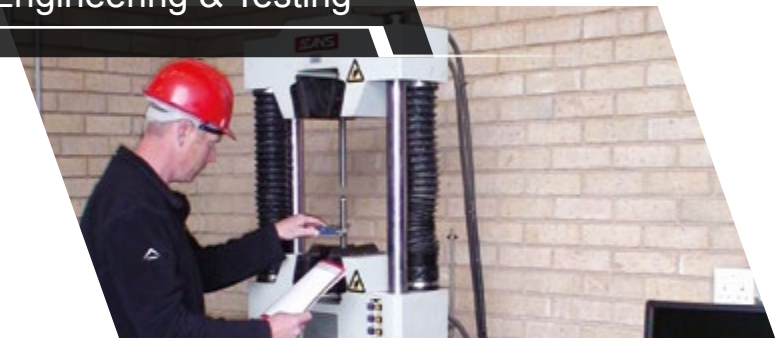
Suspended Platforms



Sanitation Services



Value Engineering & Testing



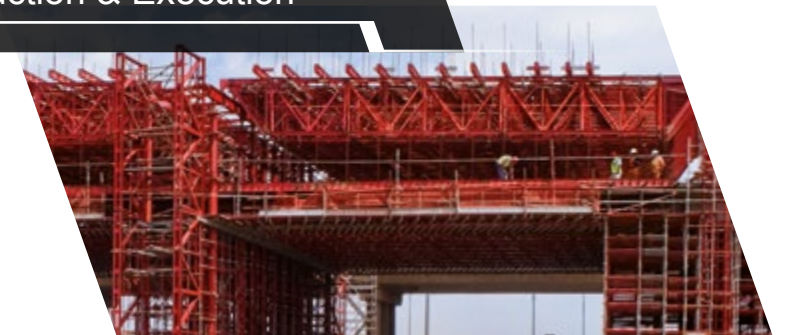
Building Maintenance Units



Hygiene Services



Construction & Execution





# Support where you need it most

Form-Scaff is the largest and most significant formwork company on the continent. Since 1963, Form-Scaff has been designing, manufacturing, hiring and selling world-class formwork and scaffolding products and are the market leaders in Africa. In 2019 Form-Scaff became the exclusive distribution partner for Doka in sub-Saharan Africa. Doka is one of the most technologically advanced formwork companies in the world and brings enormous experience and process expertise to the organisation.

## Products

The Form-Scaff and Doka formwork product range provide a solution for any type of column, wall or slab formwork requirement. They are world-class forming solutions that can be applied to all building, construction and civil engineering projects and include well-known brand names such as Kwik-Deck, Econo-Form, Multi-Form, DokaFlex, DokaDek and Frami.

Scaffolding applications are delivered through Form-Scaff's high quality Kwik-Stage system – southern Africa's industry benchmark scaffolding system – as well as the highly renowned galvanized DokaScaff Uni system.

## Services

The Form-Scaff product range is supported by turnkey services including: detailed design and engineering services, equipment management, on-site coordination and technical support and training.





## Committed to Performance Excellence

SGB-Cape has a performance-driven culture centred on a commitment to quality, service delivery, safety and competitive pricing. SGB-Cape is one of the biggest scaffolding and industrial maintenance companies in Africa.

SGB-Cape specialises in project and plant maintenance, new builds and shutdowns. It provides the following services:

### Access Scaffolding

With the ongoing development of scaffolding systems and components, SGB-Cape is able to provide continuously improved access solutions which in turn deliver improved safety and productivity.

### Thermal Insulation and Cladding

SGB-Cape offers the supply and application of thermal insulation and cladding systems with a temperature range of between 200 - 600 degrees centigrade. These services are designed to meet the requirements of specific industry sectors including the petrochemical, oil refining, power generation and paper and pulp, as well as general process engineering applications.

### Industrial Corrosion protection

High-pressure surface preparation and cleaning, abrasive blasting, ultra-high water blasting (UHP) and the application of specialised coatings, including fireproofing, are additional services undertaken by SGB-Cape.

### Industrial Asbestos Removal

SGB-Cape has extensive experience in the safe removal of asbestos. The company's services also include asbestos safety surveys.

### Marine Scaffolding & Offshore Personnel

SGB-Cape is a leading access scaffolding supplier to the marine ship repair industry, marine mining sector, and oil and gas industries in the coastal areas of southern Africa.

### Rope Access

Rope access is an affordable alternative to traditional scaffolding and mobile elevating work platforms. Rope access enables access to hard-to-reach locations quickly, efficiently and with minimal disruption. SGB-Cape are IRATA qualified trainers and operators.





# Smart, Fast Modular

Abacus provides space quickly. From site offices, classrooms, kitchenettes and ablution facilities to multi-storey buildings, Abacus are specialists in the manufacture, delivery, erection and management of modular building solutions. Be it a converted container, prefab or modular space that is required, Abacus can provide the right rental or purchase option.

## EzeeSpace - Versatile & Scalable

EzeeSpace is Abacus' world-class space solution that is leading the modular revolution. The versatile and scalable units can be configured to meet the client's current, and future, space requirements. Built to withstand harsh African climatic conditions, EzeeSpace units are durable. The steel exoskeleton ensures a robust structure, the Chromadeck walls are fully insulated, and built-in gutters and downpipes weather any storm and prevent leaks. Units require very little or no maintenance.

## Turnkey Contractor Camps

Abacus builds and runs customer-commissioned accommodation camps for the mining, construction and energy industries. Designed and constructed to withstand Africa's harsh environmental conditions, an Abacus contractor camp is an end-to-end solution covering construction, maintenance, services and hospitality. EzeeSpace units can easily be reconfigured or relocated to meet changing requirements.

Plans are currently underway to build a 100-bed contractor camp at Palma.



[www.abacusspace.co.za](http://www.abacusspace.co.za)

EzeeSpace double storey office block



## See Access Differently

SkyJacks has an extensive rental fleet of Temporary Suspended Platforms and Aerial Work Platforms, including straight and articulated boom lifts (cherry pickers) and traditional scissor lifts. They are also the exclusive retail distributors for Sky Climber hoists, safety devices and suspension systems and Dingli aerial work platforms - one of the fastest-growing MEWP brands in the industry.

### Aerial Work Platforms

SkyJacks has a ready-to-rent fleet of renowned, reliable and versatile equipment brands including JLG, Genie, Dingli, JCB and Easy Lift. The client can choose between a battery- driven option when a quiet or emission-free operation is critical, or diesel power for increased performance.

### Temporary Suspended Platforms

The stable and secure suspended working platforms supplied by SkyJacks enable teams to work safely and productively when working at height. Also known as swing scaffolds, hanging platforms, swing stages, gondolas and cradles, SkyJacks has designed, fabricated and installed suspended platforms in mine shafts, power station boilers, bridges, smoke-stacks, industrial plants and on virtually every type of commercial building.

### Building Maintenance Units

SkyJacks specialises in the design, manufacture, installation and maintenance of Building Maintenance Units (BMUs) and Permanent Installations (PIs).

[www.skyjacks.co.za](http://www.skyjacks.co.za)

The SkyJacks logo features a stylized red 'S' shape to the left of the word 'SkyJacks' in a bold, red, sans-serif font.



# Portable Sanitation and Hygiene Solutions

Sanitech offers a complete range of hygiene services. They have the largest toilet hire rental fleet in Africa with over 25,000 units and 200 vehicles. This is complemented with seamless and integrated hygiene services, catering for large industrial and mining companies to small corporate offices, all backed by Sanitech's ongoing access to the latest products and technology.

## Sanitation Services

Sanitech was founded in South Africa and was the first company to supply portable toilet hire and sanitation facilities to areas in which no sanitation infrastructure existed. Sanitech now has over 25 000 'ready-to-hire' units.

## Hygiene Services

Sanitech is a leading service provider of integrated hygiene solutions including professional washroom products and services, daily cleaning, deep cleaning, specialised cleaning and pest control.

## Industry Solutions

With over 40 years of experience, Sanitech has worked in the majority of industries providing solutions to mining, construction, energy, government and special events.



# Sanitech

[www.sanitech.co.za](http://www.sanitech.co.za)



Event sanitation solutions



# Contact Directory

Head Office Johannesburg: Ben Garrad +27 72 631 1373

[beng@sbgcape.co.mz](mailto:beng@sbgcape.co.mz)

Mozambique: Joel Miguel +258 84 163 8905, [joelm@wacoafrica.co.za](mailto:joelm@wacoafrica.co.za)

Please visit [www.wacoafrica.co.za](http://www.wacoafrica.co.za) for a full overview of our operations throughout Africa.



Afungi Resettlement, Palma



Afungi Resettlement, Palma



Tete Bridge



Nacala Overpass



Mcnet Building, Maputo